

DATA ENTRY SUPERVISION

The data processing activities of the survey involve manual and automatic processes that have a direct impact on the quality of the data. For this reason all of the staff dealing with these processes should have a clear understanding of their duties as well as the procedures and methods to be used in order for the data processing to run smoothly.

The data processing can be compared to an assembly line where the unit of work is a cluster. This means that once a cluster arrives in the central office the cluster has to be kept as a whole. One office editor will be responsible for editing and coding a complete cluster, one data entry operator will enter all of the questionnaires for that cluster, and so on. Below is a list of the main processes involved in data processing.

- 1) Reception and verification of questionnaires
- 2) Office editing and coding of open-ended questions
- 3) Data entry
- 4) Secondary editing

I. RECEPTION OF QUESTIONNAIRES

When a cluster of questionnaires arrives in the office, it will be received by the questionnaire administrator who will check that all questionnaires and forms have been returned, and will record the number of completed and incomplete questionnaires on the data processing control form for each cluster. The questionnaire administrator will then give the cluster to the office editor for editing.

II. OFFICE EDITING AND CODING

Because data entry will be carried out using an intelligent data entry program, a very detailed editing is not recommended. Instead, the office editors should concentrate on the controls listed on the **office editing** instructions and the coding of open-ended questions. Below is a general set of rules to be followed in editing questionnaires, in addition to the particular rules given in the **office editing** instructions.

General Editing Rules

- The coding of open-ended questions or modifications to the data made by this group should be recorded using a green pen, like the supervisor and data entry staff. The office staff ink color must be different from the interviewer (blue), field supervisor and field editor (red).
- When making corrections, never write over the code initially recorded in the questionnaire. Instead, cross it out with a single line and write the new code alongside the old code.

- As a general rule when a question requires a value and a response was not recorded on the questionnaire for that question, a MISSING code should be assigned to that question. However, if there is enough evidence to support the assignment of a valid code, then the MISSING value should not be used and the valid code should be assigned instead. The MISSING codes are 9, 99, 999 and 9999, depending on the number of digits of the question. If the question has alphabetic codes, the missing code is the question mark '?' character.

III. ASSIGNMENT FOR DATA ENTRY

After questionnaires have been manually edited in the office they are ready for data processing. Before data processing begins the batch of questionnaires for the cluster should be registered in the Data Processing Control File. To access the control file, use the supervisor's menu as described in section VI and select option C to modify the control file. Give the cluster number and then select option E (Enter/Edit sample point totals). Record the date the questionnaires were received from editing in the Date Received column. By pressing the Enter key on this field, the current date will automatically be put in the field.

Using the Cluster Control form, enter the counts of household and individual questionnaires in the nine columns provided in the Data Processing Control File, entering the totals for all, complete and incomplete. The cluster is now ready for data entry, and can be assigned to a data entry operator.

IV. ENTRY OF QUESTIONNAIRES

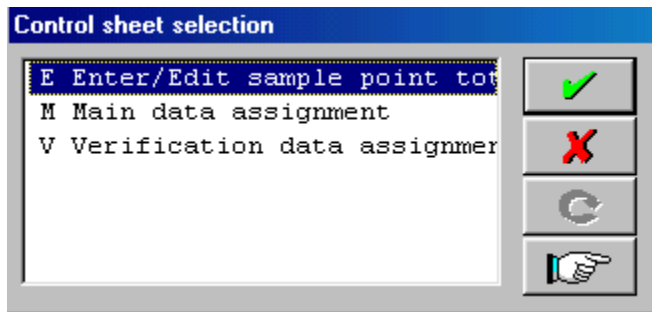
When a data entry operator starts each day, a cluster will be assigned for the operator to enter. If the operator had not finished a cluster at the end of the previous day, the same cluster should be assigned to the operator. When assigning a new cluster for main data entry to an operator, write today's date and the sample point number on the Assigned Main column of the operator's work log. Also record the name of the operator, the operator number and the date in the three fields provided for main data entry (M:) on the Cluster Control File. Use option M in the control file to assign main data entry.

Do not assign a cluster to a data entry operator if the reception of the questionnaires has not been performed for the cluster. That is, the number of household and individual questionnaires, both completed and incomplete must be recorded on the Cluster Control Sheet and in the Data Processing Control File.

Data entry operators should **never** leave the computer in the middle of data entry. However, there is a function key combination CTRL-S (stop data entry) that allows the operator to leave the data entry program at any point, but no data entered in the household will be saved. Only allow them to use this option in case of a power outage if the operator just began entry of a new questionnaire and time provided by the UPS will not allow complete entry of the questionnaire.

V. CONTROL FILE

The control file menu is used to keep track of the processing of the survey. The Cluster Control Sheet contains some of the same information, but the control file includes additional information. The main menu for the control file looks as follows:



Select by pressing a highlighted letter

The control file menu offers the opportunity to enter information about the receipt of questionnaires, the total number of questionnaires and their assignment to the data entry operators for main data entry and for verification. The control file also keeps track of the processing of the cluster through the other stages of data processing until a final data file is produced for the cluster. After using any of the options from the control file menu, the program will ask you to confirm that you wish to update the data. Press Y (Yes) to update, or N (No) to quit without saving the changes, or R (return and correct) to make a change to the data just entered.

VI. SUPERVISOR'S MENU

The supervisor's menu is used to perform many of the data processing tasks after data entry and also to keep the control file up to date. To access the supervisor menu, double click the DHS Supervisor icon on the desktop. The supervisor's menu below will appear:

DHS 2002 Demographic and Health Surveys	SUPERVISORS MENU	Option code
File processing menu.....		F
Update CONTROL file.....		C
Report data processing status.....		R
Print data processing status report.....		P
Run check field tables		T
Print check field tables.....		O
Backup daily.....		B
Review documentation.....		D
* Enter an option code (Esc to quit)		[]

The options on the menu are:

- F File processing menu.** This option will present a second menu for file management, which is explained in Section VII. It will allow you to perform all the tasks associated with a cluster. Before entering this submenu, you will be prompted to enter a cluster number for processing.
- C Update CONTROL file.** This option will access the control file, to allow for the entering of questionnaire totals, and the assignment of data entry.
- R Report data processing status report.** This option will generate a report which shows the progress in processing of each cluster.
- P Print data processing status report.** This option will print the listing generated by option R.
- T Run check field tables.** This option will generate a list of tables from all the data entered to date. (see Appendix B)
- O Print check field tables.** This option is used to run check field tabulations (see Appendix B)
- B Backup daily.** This option is used to back up the data files on a daily basis.
- D Review documentation.** This option may be used to review this documentation.

Esc **Quit.** This will quit completely from the supervisor's menu.

The following sections of this documentation explain when each of these options is to be used.

VII. FILE PROCESSING MENU

The File Processing menu is used to perform certain tasks, related to managing data files and making copies of files to ensure that the data are properly preserved. This menu has the options to perform these tasks on a single cluster. The file management menu is:

DHS Demographic and Health Surveys	2002 FILE PROCESSING MENU	Option code
Accept cluster.....		A
List questionnaires for the cluster.....		L
Print list of questionnaires.....		Q
Verify double entered questionnaires.....		V
Print verification differences.....		O
Keep original raw data before editing.....		K
Generate error listing (secondary editing).....		G
Print error listing (secondary editing).....		P
Modify data (secondary editing).....		M
Save final raw data after editing.....		S
Transfer main data from diskette.....		T
Transfer verification data from diskette.....		U
New cluster number.....		N
* Enter an option code (Esc to return to Supervisor menu)		[]

The options on this menu are:

- A **Accept cluster.** This option will accept a cluster from the data entry machine(s) for processing. Once a cluster has passed the verification check, the supervisor's computer will no longer accept that cluster from a data entry operator's computer.
- L **List questionnaires in data file.** This option will list all of the household and individual questionnaires, both complete and incomplete for comparison with the numbers recorded on the Data Processing Control File. (Uses CheckID program)
- Q **Print listing of questionnaires.** This option will print the listing generated by option L.

- V **Verify double entered questionnaires.** This option will allow the comparison of data entered in the main data file and in the verification data file.
- O **Print verification differences.** This option will print the verification listing produced by option V.
- K **Keep original raw data before editing.** This option allows a backup of the data after the cluster has passed CheckID and passed verification, but before any secondary editing corrections have been made to the data.
- G **Generate error listing.** This option will generate the error listing for the secondary editing.
- P **Print error listing.** This option will print the error listing produced by option G.
- M **Modify data file.** This option is used for correcting errors found in the data file as part of the secondary editing process. To aid the supervisor and data entry operators regarding variable names and labels when trying to resolve problems on the questionnaire during data entry or correction to the data, please refer to **Appendix A.**
- S **Save final edited data file.** This option will save the final edited data file on the hard disk. These data are before imputation of final dates is executed. A copy will also remain in the directory C:\CC41\WORK.
- T **Transfer main data from diskette.** In the case where a network does not exist, or a machine is not connected to the network, the transfer will be done by diskette from the data entry machine to diskette to the supervisor's machine.
- U **Transfer verification data from diskette.** Same as option T except that verification data are being transferred from data entry machine to the supervisor's via diskette.
- N **New cluster number.** This option allows the processing of a different cluster.
- Esc **Return to supervisor's menu.** This option allows you to return to the first menu.

VIII. COMPLETENESS OF DATA FILE

When a cluster has been completed and the data transferred to the main computer, the data file should be checked to ensure that all questionnaires within the cluster have been entered. Use option L, of the File Processing Menu to produce the list of questionnaires in the cluster. Check the listing to ensure that there are no error messages or warnings about the data file. If any error messages are found, there may be problems with the data file and these should be corrected before continuing. If there

are no problems, then use the END key to go to the bottom of the listing. This will display a count of questionnaires found in the data file. Check this number with the counts recorded on the Data Processing Control File. If the counts are all the same, the data is ready for verification and the system will automatically update the control file.

If the counts are not the same, use option Q to print the listing of questionnaires. Use this listing to check the data entered with the questionnaires. If some questionnaires were not entered, return the cluster to the data entry operator so that the missing questionnaires can be added. However, if there is a mistake in the count recorded in the Data Processing Control File, these figures should be corrected. Option L must be used after corrections are made. When no errors remain, mark the Cluster Control Sheet to indicate that this step has been completed.

VIV. DATA ENTRY FOR VERIFICATION

For verification, assign the cluster to a different data entry operator. Write the cluster number and date on the Operator Control Sheet in the "Assigned Verification column". Remind the operator to use option R for verification data entry. This will ensure that the verification data do not get mixed up with the main data.

Record the operator's name, the operator number and the date in the three fields provided for verification data entry on the Cluster Control sheet and enter the data in the Data Processing Control File, by using option V on the Control File Menu. During entry of verification data, "OTHER" answers will NOT be entered.

X. VERIFICATION OF DATA

After the data have been re-entered, use option V on the File Processing Menu to compare these two files. The system will automatically find the main and verification data files on the hard disk of the computer. The program will compare the two data files and produce a listing of the differences, which will be displayed. If there are differences, print the listing of differences using option O. Resolve the differences by referring to the questionnaires.

If mistakes exist in the main data file, ask the original operator to correct them, giving you a new version of the data. If mistakes exist in the verification data ask the operator who entered the verification data to correct them and give you a new copy of the data. After both data files have been corrected, remember to transfer the main and verification data from their hard disks or diskettes (if no connectivity to LAN exists), before re-running the verification.

After re-running the verification, no differences should exist; however, if some remain, repeat the process until all differences are gone. When there are no differences between the data files, the program will automatically update the Control File entry for the cluster to reflect that the verification has been completed. Mark the Cluster Control sheet to indicate that this step has been completed.

XI. KEEPING INITIAL RAW DATA

The initial raw data is the raw data file just after data entry that has been verified and checked for completeness, but has not been edited. This file is to be kept to allow analysis of types of errors found in data. To keep this file, use option F to go to the File Processing Menu, and then use option K from the File Management Menu to Keep the raw data file. Only the main data file will be kept. The index files and the OTHER answers files are not kept. The data file is kept in a directory named CC41\RAWD. When the initial raw data file has been kept, the program will automatically update the entry for Raw Backup on the Data Processing Control File for the cluster.

XII. SECONDARY EDITING

After keeping the initial raw data file, the secondary editing may begin. Use option G on the Supervisors menu to generate the error listing. Print the listing with option P and pass the listing to the data editors for corrections to be marked on the listing. The date the error listing is produced will be recorded in the four lines for editing in the Data Processing Control File.

The data editing guidelines give a full explanation of how to correct the data. After all corrections have been recorded on the listing, the listing will be returned for data file correction. Use option M on the supervisor's menu to modify the data. When modifying the data, mark each correction with a check mark (√) on the error listing. Error messages marked OK do not require any correction. After all corrections have been made to the data file, rerun the editing program using option G and print the listing with option P. Check that all errors have been corrected. If some errors still exist for the cluster, check the corrections that were made and ensure that the correction was made to the right variable and the right occurrence of the variable. If new errors appear, the old correction was probably incorrect, and should be re-corrected.

After all corrections have been made to the data and the new listing shows no errors that require correction, editing is complete for this cluster, and the final copy of the data can be saved.

XIII. SAVING FINAL EDITED DATA

After all corrections have been made to the data, and the data are clean, the final data must be saved to ensure no loss of data. Use option S from the File Processing Menu (option F from the Supervisor's Menu to access the File Processing Menu) to save the final data file. The data file is first saved to the hard disk in a subdirectory named CC41\FINAL. The data are then copied to the BACKUP disk in the zip drive. After the data file has been copied to the disk, the system will automatically write the date in the Master Backup column in the Data Processing Control File. That is the end of data processing for this cluster. Store the questionnaires for the cluster in

the storage room, with the clusters ordered according to cluster number, so that they can be retrieved easily in the future.

XIV. STATUS REPORT

To check on the progress of the survey, a status report can be produced which shows the progress of each cluster's processing. To produce this report, use option R from the Supervisor's menu. The results will be shown on the screen, and can be printed with option P on the same menu.

XV. FIELD CHECK TABLES

Field check tabulations should be produced on a weekly basis, at the end of the week, and copies should be given to survey direction and sent by E-mail to dpname@macroint.com. These tables allow a review of the progress of fieldwork and identification of problems with interviewers and teams. Corrective actions can then be taken. To produce the field check tabulations, use option T from the Supervisor's Menu. This will copy all data files currently on the main computer into a single data file, and will produce a set of tabulations. The tables can be printed if needed. A description of each of the tables is given in appendix B.

Attach the zipped electronic copy of the fieldcheck tables found in `C:\CC41\Report\Ckfield.TBL` and the electronic copy of the status report found in `C:\CC41\Report\Statrep.wrt` to the email sent to macroint.com.

APPENDIX A

CORE4	DHS-IV A-core 8.4.2
HOUSEHOLD	Household
AHCLUST	Cluster number
AHNUMBER	Household number
ASEC01	Household Identification
AHNAME	Name of household head
AHREGION	Region of residence
AHTYPE	Type of place of residence
AHLOCAL	City\Town\Countryside
AHELIGM	Eligibility for male interview
AHINT	Date of household interview
AHINTD	Day of household interview
AHINTM	Month of household interview
AHINTY	Year of household interview
AHINTNUM	Interviewer number
AHRESULT	Result of household interview
AHVISITS	Number of household visits
AHMEMBER	Total members in household
AHWOMEN	Eligible women in household
AHMEN	Eligible men in household
AHRESP	Line of household respondent
AHSUPERV	Supervisor number
AHFEDIT	Field editor number
AHOEDIT	Office editor number
AHKEYER	Data entry clerk
AHINTC	Date of HH interview (CMC)
AHWEIGHT	Household weight (6 decimals)
AMWEIGHT	Household weight-male subsample (6 decimals)
AHUAUSEL	Ultimate area selection prob.
ASEC02	Household Schedule
AH01	Line number of member
AH02	Name of household member
AH03	Relationship to head
AH04	Sex of household member
AH05	Usual resident
AH06	Slept last night
AH07	Age of household members
AH08	Eligibility for interview
AH08A	Eligibility for male interview
AH09	Child's eligibility for interview
AH10	Mother alive
AH11	Mother's line number
AH12	Father alive
AH13	Father's line number
AH14	Ever attended school
AH15	Education attainment
AH15A	Level of education attended
AH15B	Highest grade completed
AH16	Currently attending school
AH17	Attend school current year
AH18	Education attending
AH18A	Level of education attending
AH18B	Grade attending
AH19	Attend school last year
AH20	Education last year
AH20A	Level of education last year
AH20B	Grade attended last year
AHMSTAT	Marital status
ASEC03	Household Characteristics
AH21	Source of drinking water
AH22	Time to water and back (mins)

AH23	Type of toilet facility
AH24	Share facilities with other households
AH25A	Electricity
AH25B	Radio
AH25C	Television
AH25D	Telephone
AH25E	Refrigerator
AH26	Type of cooking fuel
AH27	Main material of floor
AH28A	Bicycle
AH28B	Motorcycle or Scooter
AH28C	Car or Truck
AH29	Have bednet for sleeping
AH31	Child slept under a bednet last night
AH32	Under 5 who slept under a bednet
AH33	Place for hand washing
AH34A	Items present: Water, tap
AH34B	Items present: Soap, ash, cleansing agent
AH34C	Items present: Basin
AH35	Test salt for Iodine
ASEC04	Height, Weight, Hemoglobin (women)
ALNW	Line number
AW36	Line number in household schedule
AW38	Age in years
AW40	Weight in kilograms
AW41	Height in centimetres
AW43	Result of measuring
AW44	Under age 18
AW45	Line no. of parent/caretaker
AW46	Read consent statement
AW47	Hemoglobin level (g/dl)
AW48	Currently pregnant
AW49	Result of measuring (Hemoglobin)
AWCMC	CMC of birth of woman
AWFLG	Date flag for woman's date of birth
AWMBR	Imputed month of birth
AWYBR	Woman's year of birth
AWSMK	Whether respondent smokes
AWPRG	Respondent pregnancy status
AWMOS	Months of pregnancy
AWPC1	Ht/A Percentile (resp.)
AWSD1	Ht/A Standard deviations (resp
AWRM1	Ht/A Percent ref. median (resp
AWRM3	Wt/Ht Percent ref. median (DHS
AWRM4	Wt/Ht Percent ref. median (Fog
AWRM5	Wt/Ht Percent ref. median (WHO
AWSD3	Wt/Ht Std deviations(resp) DHS
AWBM	Body mass index for respondent
AWRI	Rohrer's index for respondent
ASEC05	Height, Weight, Hemoglobin (children)
ALNC	Line number
AC36	Line number in household schedule
AC38	Age in years
AC39	Date of birth
AC39D	Day of birth
AC39M	Month of birth
AC39Y	Year of birth
AC40	Weight in kilograms
AC41	Height in centimeters
AC42	Height: lying or standing
AC43	Result of measuring
AC45	Line no. of parent/caretaker
AC46	Read consent statement
AC47	Hemoglobin level (g/dl)

AC49	Result of measuring (Hemoglobin)
ACCMC	Child's CMC of birth
ACFLG	Date flag for child's date of birth
ACMBR	Imputed month of birth
ACYBR	Child's year of birth
ACPC1	Ht/A Percentile
ACSD1	Ht/A Standard deviations
ACRM1	Ht/A Percent of ref. median
ACPC2	Wt/A Percentile
ACSD2	Wt/A Standard deviations
ACRM2	Wt/A Percent of ref. median
ACPC3	Wt/Ht Percentile
ACSD3	Wt/Ht Standard deviations
ACRM3	Wt/Ht Percent of ref. median
ACMLN	Mother's line no. from individ. questionnaire
ACBO	Birth order of child
ACBI	Birth interval
ACED1	Highest educational level
ACED2	Highest grade at that level
INDIVIDUAL	Individual
ALINE	Line number of woman
ASEC11	Individual Identification
ACLUSTER	Cluster number
ANUMBER	Household number
AREGION	Region of residence
ATYPE	Type of place of residence
ALocal	City\Town\Countryside
AQTYPE	Type of questionnaire
AINT	Date of interview
AINTD	Day of interview
AINTM	Month of interview
AINTY	Year of interview
AINTNUM	Interviewer number
ARESULT	Result of individual interview
AVISITS	Total number of visits
ASUPERV	Supervisor number
AFEDIT	Field editor number
AOEDIT	Office editor number
AKEYER	Data entry clerk
AINTC	Date of interview (CMC)
AWEIGHT	Sample weight (6 decimals)
ASEC12	Respondent's Background
A101	Start of interview
A101H	Start of interview (hour)
A101M	Start of interview (minutes)
A102	Childhood place of residence
A103	Time lived in current place of residence
A104	Previous place of residence
A105	Date of birth
A105M	Month of birth
A105Y	Year of birth
A106	Current age of respondent
A107	Ever attended school
A108	Highest educational level
A109	Highest grade at that level
A111	Sentence read
A112	Ever participated in a literacy program
A114	Reads newspaper
A115	Listens to radio
A116	Watches television
A117	Religion
A118	Ethnicity
A105C	Date of birth (CMC)
A105F	Date flag for A105C

A106C	Age of respondent calculated
A108A	Highest educational level
ASEC21	Reproduction
A201	Ever given birth
A202	Sons or daughters living with
A203A	Sons at home
A203B	Daughters at home
A204	Sons or daughters living away
A205A	Sons living elsewhere
A205B	Daughters living elsewhere
A206	Sons or daughters who died
A207A	Boys who died
A207B	Girls who died
A208	Total children ever born
ASEC22	Birth History
A212	Line number of child
A213	Single or Multiple Birth
A214	Sex of child
A215	Time of birth
A215M	Month of birth
A215Y	Year of birth
A216	Child is still alive
A217	Current age of child
A218	Child living with respondent
A219	Line number in the household
A220	Age at death
A220U	Age at death (units)
A220N	Age at death (number)
A221	Live birth between births
A215C	Date of birth of child (CMC)
A215F	Date flag for A215C
A220C	Age at death months (imputed)
A220F	Date flag for A220C
ASEC23	Calendar
ACAL	Calendar
ACALCOL	Column number
ACALMIN	Minimum row of calendar
ACALMAX	Maximum row of calendar
ACALCODE	Code for calendar
ASEC24	Reproduction (continued)
A222	Birth between last & interview
A224	Births since January 199?
A226	Currently pregnant
A227	Duration of current pregnancy
A228	Time wanted pregnancy
A229	Miscarriage, abortion, or stillbirth
A230	Time pregnancy ended
A230M	Month pregnancy ended
A230Y	Year pregnancy ended
A232	Months pregnant when pregnancy ended
A233	Other such pregnancies
A235	Terminated pregnancy before 199?
A236	Time of last non-live birth preg before 199?
A236M	Month of last non-live birth preg before 199?
A236Y	Year of last non-live birth preg before 199?
A237	Time since last period
A237U	Time since last period (unit)
A237N	Time since last period (number)
A238	Knowledge of fertile period
A239	When is the fertile period
A227C	Date of conception (CMC)
A227F	Date flag for A227C
A237F	Flag for A237
ASEC31	Contraceptive Knowledge & Use

ASEC31_DGRP	Contraception listing
A301N	Contraceptive method
A301	Heard of method
A302	Ever used method
ASEC32	Contraceptive Practice
A304	Ever used a contraceptive method
A307	Living children at first use
A310	Currently using any method
A311	Current contraceptive method
A313	Where sterilization took place
A314	Told sterilization mean no more children
A316	Time of start of use
A316M	Month of start of use
A316Y	Year of start of use
B319	Current contraceptive method (filter)
B320	Source first started current method
A321	Current contraceptive method (filter)
A322	Told about side effects
A323	Told about side effects by health or FP
worker	
A324	Told how to deal with side effects
A325	Told about other FP methods
A326	Told about other FP meth by health/FP worker
A327	Current contraceptive method (filter)
A328	Last source of FP
A329	Know source for FP
A330	Source for FP
A331	Visited by FP worker in last 12 months
A332	Visited health facility in last 12 months
A333	At health facility, told of FP
A311N	Current contraceptive method (major method)
A316C	Date of sterilization (CMC)
A316F	Date flag for A316C
ASEC41	Pregnancy and Breastfeeding
ACOL41	Column number
A403	Line number
A405	Time wanted pregnancy
A406	Time would have waited
A406U	Time would have waited (unit)
A406N	Time would have waited (number)
A407	Antenatal care for pregnancy
A408	Month of first antenatal visit
A409	Antenatal visits for pregnancy
A411	Month of last antenatal visit
A412A	Antenatal care: Weight
A412B	Antenatal care: Height
A412C	Antenatal care: Blood pressure
A412D	Antenatal care: Urine sample
A412E	Antenatal care: Blood sample
A413	Told about signs of complications
A414	Told about sources of care for complications
A415	Tetanus injection in pregnancy
A416	Number of tetanus injections
A417	Iron tablets during pregnancy
A418	Number of days took iron tablets
A419	Daylight vision problems
A420	Night blindness
A421	Had anti-malarial drugs
A422	Anti-malarial drugs
A423	Size of child at birth
A424	Weighed at birth
A425	Weight at birth
A425U	Weight at birth (units)
A425N	Weight in grams

A426	Assistance at delivery
A427	Place of delivery
A428	Delivery by caesarian section
A429	Received postnatal check
A430	First postnatal care
A430U	First postnatal care (Units)
A430N	First postnatal care (Number)
A431	Postnatal care
A432	Place of postnatal check
A433	Received vitamin A
A434	Period returned
A435	Period returned between births
A436	Months without a period
A438	Resumed sexual relations
A439	Months without sexual activity
A440	Ever breastfed
A441	When child put to breast
A441U	When child put to breast (Unit)
A441N	When child put to breast (Number)
A442	Any fluid given before breastmilk
A443	Fluid given before breastmilk
A445	Still breastfeeding
A446	Months child was breastfed
A448	Times breastfed during night
A449	Times breastfed during day
A450	Drink in a bottle with nipple
A451	Sugar added to any foods or liquids child ate
A452	Times fed solid or semi-solid food yesterday
A436F	Flag for amenorrhea
A439F	Flag for abstinence
A446F	Flag for breastfeeding
ASEC42	Immunization and Health
ACOL42	Column number
A455	Line number in birth history
A457	Received Vitamin A
A458	Has vaccination card
A459	Ever had vaccination card
A460B	BCG date
D460B	BCG day
M460B	BCG month
Y460B	BCG year
A460P0	Polio at birth date
D460P0	Polio at birth day
M460P0	Polio at birth month
Y460P0	Polio at birth year
A460P1	Polio 1 date
D460P1	Polio 1 day
M460P1	Polio 1 month
Y460P1	Polio 1 year
A460P2	Polio 2 date
D460P2	Polio 2 day
M460P2	Polio 2 month
Y460P2	Polio 2 year
A460P3	Polio 3 date
D460P3	Polio 3 day
M460P3	Polio 3 month
Y460P3	Polio 3 year
A460D1	DPT 1 date
D460D1	DPT 1 day
M460D1	DPT 1 month
Y460D1	DPT 1 year
A460D2	DPT 2 date
D460D2	DPT 2 day
M460D2	DPT 2 month

Y460D2	DPT 2 year
A460D3	DPT 3 date
D460D3	DPT 3 day
M460D3	DPT 3 month
Y460D3	DPT 3 year
A460M	Measles date
D460M	Measles day
M460M	Measles month
Y460M	Measles year
A460VA	Vitamin A date
D460VA	Vitamin A day
M460VA	Vitamin A month
Y460VA	Vitamin A year
A461	Other vaccination not recorded
A462	Ever receive vaccinations
A463A	BCG vaccination
A463B	Polio vaccine
A463C	When first polio was given
A463D	Number of Polio vaccines
A463E	DPT vaccination
A463F	Number of DPT vaccines
A463G	Measles vaccine
A464	Any vaccination received during a campaign
A465	National imm. campaign received vacc.
A466	Fever in last 2 weeks
A467	Cough in last 2 weeks
A468	Breathed faster with short, fast breaths
A470	Sought advice/treatment for fever/cough
A471	Where sought advice/treatment
A473	Any drugs for fever
A474	Drugs for fever
A475	Diarrhea in last 2 weeks
A476	Drinking pattern with diarrhea
A477	Eating pattern with diarrhea
A478A	Fluid from ORS Packet
A478B	Home-made fluid
A479	Anything else to treat diarrh.
A480	Given to treat diarrhea
A481	Sought treatment for diarrhea
A482	Where sought treatment
ASEC43	Oral Rehydration
A485	Disposal of stools
A487	Ever heard of ORS product
A489	Make decision to take children for care
A490A	Care factors: Knowing where to go
A490B	Care factors: Getting permission
A490C	Care factors: Getting money for treatment
A490D	Care factors: no nearby health facility
A490E	Care factors: Having to take transport
A490F	Care factors: Not wanting to go alone
A490G	Care factors: No female health provider
A492_DGRP	Liquids given
A492A	Liquids given last 7 days
A492B	Liquids given yesterday
A493_DGRP	Foods given
A493A	Foods given last 7 days
A493B	Foods given yesterday
A494	Slept under bednet last night
A495	Washed hands before preparing last meal
A496	Currently smokes tobacco
A498	Times smoked last 24 hours
A499A	Ever drunk alcohol containing beverage
A499B	Ever gotten drunk
A499C	Drunk alcohol in last 3 months

A499E	Number of times got drunk
A499F	Injection in last 3 months
A499G	Number of injections
A499H	Person who gave injection last time
ASEC51	Marriage and Sexual Activity
A501	Currently in union
A502	Have ever been married or lived with a man
A504	Current marital status
A505	Partner living with respondent
A506	Line number of husband
B507	Husband has other wives
B508	Number of other wives
B509	Wife's rank number
A510	In union more than once
A511	Time of first union
A511M	Time of first union (month)
A511Y	Time of first union (year)
A512	Age at first union
A514	Age at first intercourse
A515	Time since last intercourse
A515U	Time since last intercourse (unit)
A515N	Time since last intercourse (number)
A516	Used condom during last intercourse
A516A	Reason used a condom last time had sex
A517	Relationship with last partner
A518	Duration of relationship
A518U	Duration of relationship (Units)
A518N	Duration of relationship (Number)
A519	Intercourse anyone else in last 12 months
A520	Used condom last interc w/other partner
A520A	Reason used a condom last time had sex
A521	Relationship with other partner
A522	Duration of relationship with other partner
A522U	Duration relationship w/other ptner (Units)
A522N	Duration relationship w/other ptner (Number)
A522A	Intercourse anyone else in last 12 months
A522B	Used condom last interc w/other partner
A522C	Reason used a condom last time had sex
A522D	Relationship with other partner
A522E	Duration of relationship with other partner
A522EU	Duration relationship w/other ptner (Units)
A522EN	Duration relationship w/other ptner (Number)
A523	Total number of partners last 12 months
A524	Knows source for condoms
A525	Source for condoms
A526	Could get condoms herself
A527	Knows source for female condoms
A528	Source for female condoms
A529	Could get female condoms herself
A511C	Date of first union (CMC)
A511F	Date flag for A511C
A512C	Age at first union (calculated)
A514F	Flag for A514
A515F	Flag for A515
ASEC61	Fertility Preferences
A602	Desire future child
A603	Time for future birth
A603U	Time for future birth (unit)
A603N	Time for future birth (number)
A607	Main reason not using to limit or to space
A608	Happy if became pregnant
A610	Intend to use method any time
A611	Method intend to use
A612	Main reason not intend to use

A613	Would ever use method if married
A614	Ideal number of children
A615A	Ideal number of boys
A615B	Ideal number of girls
A615C	Ideal number of either
A616	Approve/disapprove FP
A617A	Heard FP on radio last months
A617B	Heard FP on TV last months
A617C	Heard FP newspaper last months
A619	Discuss FP with friends last months
A620	With whom discussed FP
A623	Decision maker for using contraception
A624	Partner approves others use FP
A625	Discuss FP with partner in last year
A627	Partner's preferred number of children
A628A	Reason for not having sex: Husband has STD
A628B	Reason not having sex: Husband other women
A628C	Reason for not having sex: Recent birth
A628D	Reason for not having sex: Tired, mood
ASEC71	Husbands and Womans Background
A702	Partner's age
A703	Partner ever attended school
A704	Partner's level of education
A705	Partner's highest grade
A706	Partner's occupation
A707	Respondent currently working
A708	Currently working: probed
A709	Worked in last 12 months
A710	Respondent's occupation
A712	Works on own land
A713	Work for a family member
A714	Usually work at home or away
A715	Work through year/seasonally
A716	Paid in cash or kind
A717	Who decides how earnings spent
A718	Share used for household expenditures
A719A	Final say on: Own health care
A719B	Final say on: Making large HH purchasess
A719C	Final say on: Making daily needs HH purchases
A719D	Final say on: Visits to family
A719E	Final say on: Food to cook each day
A720A	Presence of: Children <10
A720B	Presence of: Husband
A720C	Presence of: Other males
A720D	Presence of: Other females
A721A	Justifies domestic violence: Wife goes out
A721B	Justify domestic violence: Wife neglects kids
A721C	Justifies domestic violence: Wife argues
A721D	Justifies domestic violence: Wife refuses sex
A721E	Justifies domestic violence: Wife burns food
A704A	Partners level of education
ASEC81	AIDS Knowledge, Attitudes
A801	Ever heard of HIV/AIDS
A802	Ways to avoid AIDS
A803	Means of avoiding AIDS
A804	Reduce chances of AIDS by having one sex ptrnr
A805	Can get AIDS from mosquito bites
A806	Reduce chances of AIDS by using condom
A807	Can get AIDS by sharing food
A809	Can a healthy-looking person have AIDS
A810	Knows someone with AIDS
A811	Mother can transmit AIDS to a child
A812A	AIDS transmitted mother to child: during preg
A812B	AIDS transmitted mother to child: delivery

A812C	AIDS transmit mother to child:breastfeeding
A814	Talked w/partner about ways of avoiding AIDS
A814AA	Opinion of AIDS on radio
A814AB	Opinion of AIDS on TV
A814AC	Opinion of AIDS in newspaper
A815	AIDS in family kept secret
A816	Willing to care for relative w/AIDS in the HH
A816A	Teacher with AIDS allowed continue teaching
A816B	Children 12-14 should be taught about condoms
A816C	Ever been tested for AIDS
A816D	Want to be tested for AIDS
A816E	Know a place to be tested for AIDS
A816F	Place known for AIDS test
A817	Heard about other STDs
A818	Male symptoms of STDs
A819	Female symptoms of STDs
A819B	Had an STD in last 12 months
A819C	Had abnormal genital discharge last 12 months
A819D	Had a genital sore or ulcer in last 12 months
A819F	Sought advice or treatment for STD
A819GA	STD: went to clinic, hospital, doctor
A819GB	STD: consulted a traditional healer
A819GC	STD: advice or medicine in shop or pharmacy
A819GD	STD: asked advice from friends, relatives
A819H	Informed person with whom having sex of STD
A819I	Avoided infecting partner with STD
A819JA	Avoided infecting partner by using medicine
A819JB	Avoided infecting partner by stop having sex
A819JC	Avoided infecting partner by using a condom
A820	End of interview
A820H	End of interview (hour)
A820M	End of interview (minutes)
A901	Mother's children ever born
A903	Children born before respond.
A914	End of interview
A914H	End of interview (hour)
A914M	End of interview (minutes)
ASEC91	Maternal Mortality
A904	Column number
A905	Sex of sibling
A906	Sibling alive
A907	Age of sibling
A908	Years since siblings death
A909	Age of sibling at death
A910	Died while pregnant
A911	Died during childbirth
A912	Died within 2 months of delivery
A913	Children gave birth to
A907C	CMC date of birth of sibling
A908C	CMC date of death of sibling
AMSEC12	Respondent's Background
AM101	Start of interview
AM101H	Start of interview (hour)
AM101M	Start of interview (minutes)
AM102	Childhood place of residence
AM103	Time lived in current place of residence
AM104	Previous place of residence
AM105	Ever traveled away fr home in last 12 months
AM106	Numbers of trips away during last 12 months
AM107	Away for more than one month
AM108	Time of birth
AM108M	Month of birth
AM108Y	Year of birth
AM109	Current age of respondent

AM110	Ever attended school
AM111	Highest educational level
AM112	Highest grade at that level
AM114	Sentence read
AM115	Ever participated in literacy program
AM117	Reads newspaper
AM118	Listens to radio
AM119	Watches TV
AM120	Currently working
AM121	Worked last 12 months
AM122	Activity last 12 months
AM123	Occupation
AM125	Works on own land
AM126	Number of months worked last year
AM127	Paid in cash or kind
AM128	Share used for household expenditures
AM129	Religion
AM130	Ethnicity
AM108C	Date of birth (CMC)
AM108F	Date flag for AM108C
AM109C	Age of respondent calculated
AM110A	Highest educational level
AMSEC21	Reproduction
AM201	Ever fathered any children
AM202	Sons or daughters living with
AM203A	Sons at home
AM203B	Daughters at home
AM204	Sons or daughters living away
AM205A	Sons living elsewhere
AM205B	Daughters living elsewhere
AM206	Sons or daughters who died
AM207A	Boys who died
AM207B	Girls who died
AM209	Total children ever fathered
AM211	Children have same mother
AM212	Women respondent fathered children with
AM213	Age at birth of first child
AM214	Married to mother when first child was born
AMSEC31	Contraceptive Knowledge & Use
AMSEC31_DGRP	Contraception listing
AM3N	Contraceptive method
AM301	Heard of method
AM302	Ever used method
AMSEC32	Contraceptive Practice
AMSEC32_DGRP	Attitude regarding Pill,IUD,Fem Steril. as FP
AM304	Knows Pill, IUD, Female Sterilization
AM305	Method suitable for couples planning a family
AM306	Advantages over other methods
AM307	Disadvantages of using the method
AM308	Increased chance woman get preg certain days
AM309	Days when increased chance getting pregnant
AM310	Can a woman who is breastfeeding get pregnant
AM312	Age at first use of condom
AM313	Reason of first condom use
AM314	Frequency of use of condom
AM315	Timing of use
AM316	Experienced problems with condom
AM318	Brand of condom
AM319	Source of condoms
AM320	Cost of condom's packet
AM321	Number of condom in each packet
AM322	Affordability of condoms
AM323A	Diminish a man's sexual pleasure
AM323B	Inconvenient to use

AM323C	Can be reused
AM323D	Protects against disease
AM323E	Women no right tell man whether should use it
AM325	Consider getting sterilized
AM326	Benefits of male sterilization
AM327	Reason for never getting sterilized
AM328A	Contraception woman's business, man not worry
AM328B	Sterilized women become promiscuous
AM328C	To a man equivalent to being castrated
AM328D	Woman can get pregnant, should be sterilized
AMSEC41	Marriage and Sexual Activity
AM401	Currently in union
AM402	Number of wives
AM403	Other partners
AM404	Number of live-in partners
AM405A	Other regular sexual partners
AM405	Regular or occasional sexual partners
AM407	Have ever been married or lived with a woman
AM408	Current marital status
AM409_DGRP	Wife/partner listing
AM409A	Line number of wife, partner
AM409B	Wife or partner
AM411	In union more than once
AM412	Ever been married with other women
AM413	Number of women
AM414	Time of first union
AM414M	Time of first union (month)
AM414Y	Time of first union (year)
AM415	Age at first union
AM416	Age at first intercourse
AM417	Time since last intercourse
AM417U	Time since last intercourse (unit)
AM417N	Time since last intercourse (number)
AM418	Used condom during last intercourse
AM419	Reason used condom
AM421	Used FP during last intercourse
AM422	Contraceptive method
AM423	Reason for not using FP
AM424	Relationship with last partner
AM425	Duration of relationship
AM425U	Duration of relationship (Units)
AM425N	Duration of relationship (Number)
AM426	Intercourse with other than partner last 12m
AM427	Used condom last intercourse w/oth than ptr
AM428	Reason used condom
AM430	Used FP during last sex to avoid pregnancy
AM431	Method used
AM432	Reason did not use FP
AM433	Relationship with other than partner
AM434	Duration of relationship w/other than partner
AM434U	Duration relationship w/oth than ptr (Units)
AM434N	Duration relationship w/oth than ptr (Numb)
AM435	Sex w/anyone else last 12 months
AM436	Used a condom during this intercourse
AM437	Reason used condom
AM439	Used FP during last intercourse
AM440	Contraceptive method
AM441	Reason did not use FP
AM442	Relationship with last partner
AM443	Duration of relationship
AM443U	Duration of relationship (Units)
AM443N	Duration of relationship (Number)
AM444	Number of partners last 12m
AM445	Ever paid for sex

AM446	Time since last paid for sex
AM446U	Time since last paid for sex
AM446N	Time since last paid for sex (number)
AM447	Used condom last paid for sex
AM449	Knows source of condoms
AM450	Source of condoms
AM451	Can get condoms
AM452	Knows source of female condom
AM453	Source of female condom
AM454	Can get female condom
AM406	One or more regular partner
AM414C	Date of first union (CMC)
AM414F	Date flag for AM414C
AM415C	Age at first union (calculated)
AM416F	Flag for AM416
AM417F	Flag for AM417
AMSEC51	Fertility Preferences
AMSEC51_DGRP	Wife/partner and pregnancy/FP attitudes
AMCOL5	Column number for fertility preferences
AM503	Wife/partner currently pregnant
AM504	Time wanted pregnancy
AM505	Problem to became pregnant
AM506	Partner number of child prefer
AM507	Discuss FP with partner last year
AM508	Partner approves others use FP
AM509	Desire future child
AM510	Time for future birth
AM510U	Time for future birth (unit)
AM510N	Time for future birth (number)
AM512	Wife would prefer next child with
AM513	Planning have children with any other partner
AM514	Plan to take another wife
AM515	Main reason may take another wife
AM517	Intend to use method any time
AM518	Future method preferred
AM519	Main reason not intend to use
AM520	Would ever use method if married
AM521	Ideal number of children
AM522A	Ideal number of boys
AM522B	Ideal number of girls
AM522C	Ideal number of either
AM523	Approve/disapprove FP
AM524A	Heard FP on radio last months
AM524B	Heard FP on TV last months
AM524C	Heard FP newspaper last months
AM526	Discuss FP last months
AM527	With whom discussed FP
AM528	Discussed FP with health worker
AM529A	Interest in avoiding unwanted pregnancies
AM529B	Interest in helping partner having safe preg.
AM529C	Interest helping to care for new born infants
AMSEC61	Participation in Health Care
AM602	Sex of last born child
AM603	Time of last birth
AM603M	Time of last birth (Month)
AM603Y	Time of last birth (Year)
AM604	Child still alive
AM605	Age at death
AM605U	Age at death (Unit)
AM605N	Age at death (Number)
AM606	Line number of mother of last born
AM609	Relationship with last born's mother
AM610	Wanted last pregnancy
AM611	Preferred waiting time

AM611U	Preferred waiting time
AM611N	Preferred waiting time (number)
AMSEC61_DGRP	Pre and post delivery health care
AM612	Mother recieved advice or care
AM613	Care free, covered by insurance or paid for
AM614	Main provider of money, goods to pay for care
AM615	Reason did not receive care
AM616	Pregnancy with complications
AM617	Talked hlth prov re mother's hlth during preg
AM618A	Health provider: Foods eat during pregnancy
AM618B	Health provider: Amount of rest
AM618C	Health provider: Preparation for the delivery
AM618D	Health provider: Types of health problems
AM620A	Ever heard of BCG vaccine
AM621A	Ever received BCG vaccine
AM620B	Ever heard of Polio vaccine
AM621B	Ever received Polio vaccine
AM620C	Ever heard of DPT vaccine
AM621C	Ever received DPT vaccine
AM620D	Ever heard of Measles vaccine
AM621D	Ever received Measles vaccine
AM623	Reason for not vaccinating child
AM624	Child lives in the household
AM625	Who decides what to do if child ill
AM627A	Vaccinating the child without permission
AM627B	Taking child to a doctor without permission
AM628	Drinking pattern for diarrhea
AM629	Signs of diarrhea needing health visit
AM630	Signs of cough for health visit
AMSEC62_DGRP	Recent illness and treatment listing
AM631	Ever had illness
AM632	Had problem in last 3 months
AM633	Sought treatment
AM635	Prevented from work last 3 months
AM636	Number of days unable to work
AM638	Source of treatment
AM639	Had an injection last 3 months
AM640	Times had an injection
AM641	Person giving the injection
AM642	Currently smokes tobacco
AM644	Times smoked cigarettes in last 24 hours
AM645	Ever drunk alcohol
AM646	Times drunk alcohol last 3 months
AM647	Ever gotten "drunk"
AM649	Times gotten "drunk" in last 3 months
AMSEC71	AIDS Knowledge, Attitudes
AM701	Ever heard of AIDS
AM702	Ways to avoid AIDS
AM703	Means of avoiding AIDS
AM704	Protect from AIDS by having one sex partner
AM705	Can get AIDS from mosquito bites
AM706	Protect from AIDS by using condom
AM707	Can get AIDS by sharing food
AM709	Can a healthy-looking person have AIDS
AM710	Knows someone with AIDS
AM711	Mother can transmit AIDS to a child
AM712A	AIDS transmitted mother to child:during preg
AM712B	AIDS transmitted mother to child: delivery
AM712C	AIDS transmitted mother to child: brstfeeding
AM714	Talked with partner about ways avoiding AIDS
AM715A	Opinion of AIDS on radio
AM715B	Opinion of AIDS on TV
AM715C	Opinion of AIDS in newspaper
AM716	AIDS in family kept secret

AM717	Willing care for relative with AIDS in the HH
AM718	Female teacher with AIDS continue teaching
AM719	Children 12-14 taught about condom
AM720	Ever been tested for AIDS
AM721	Want to be tested
AM722	Knows a place for AIDS test
AM723	Place for AIDS test
AM724	Heard about other STDs
AM725	Male symptoms of STDs
AM726	Female symptoms of STDs
AM728	Had an STD last 12m
AM729	Genital discharge last 12m
AM730	Genital sore or ulcer last 12m
AM732	Seek advice or treatment
AM733A	Sought advice/treatment in clinic
AM733B	Sought advice/treatment at traditional healer
AM733C	Sought advice/treatment in shop/pharmacy
AM733D	Sought advice/treatment friends/relatives
AM734	Informed partner of STD
AM735	Did anything to avoid infecting partner
AM736A	Avoided infecting partner by using medicine
AM736B	Avoided infecting partner by stop having sex
AM736C	Avoided infecting partner by using a condom
AMSEC81	Attitude Towards Women
AM801A	Decision on large HH purchases
AM801B	Decision on small daily HH purchases
AM801C	Decision to visit family, friends
AM801D	Decision on use of wife's earnings
AM801E	Decision how many and when to have children
AM802A	Beating justify: going out w/out telling him
AM802B	Beating justification: neglects children
AM802C	Beating justification: arguing
AM802D	Beating justification: refusing sex
AM802E	Beating justification: burning food
AM803A	Right to refuse sex: tired and not in mood
AM803B	Right to refuse sex: given birth recently
AM803C	Right to refuse sex: husband other partners
AM803D	Right to refuse sex: husband has STD
AM804A	Husband has right to: get angry
AM804B	Husband has right to: refuse financial supprt
AM804C	Husband has right to: use force unwanted sex
AM804D	Husband has right to: have sex w/other women
AM805	End of interview
AM805H	End of interview (hour)
AM805M	End of interview (minutes)